

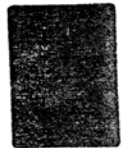
**DECLARING BUUG WATERSHED FOREST RESERVE SITUATED IN THE MUNICIPALITY OF BUUG, PROVINCE OF ZAMBOANGA DEL SUR AS PROTECTED AREA AND PORTIONS OF THE PERIPHERAL AREAS AS BUFFER ZONE PURSUANT TO REPUBLIC ACT NO. 7586 (NIPAS ACT OF 1992), AND SHALL BE KNOWN AS BUUG NATURAL BIOTIC AREA.**

Upon the recommendation of the Secretary of the Department of Environment and Natural resources (DENR) and pursuant to the powers vested upon me by law, I, JOSEPH EJERCITO ESTRADA, President of the Philippines, do hereby set aside and declare Buug Watershed Forest Reserve situated in the municipality of Buug, Province of Zamboanga del Sur, as a Protected Area under the category of Natural Biotic Area and portions of the peripheral areas as Buffer Zone, subject to private rights and without prejudice to the rights of the indigenous people as provided for in R.A. No. 8371, DENR Administrative Order No. 93-02, and other related rules and regulations, if any, as described in the DENR NIPAS Map No. R09-02.

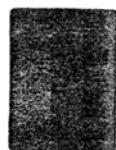
**TECHNICAL DESCRIPTIONS**

The Buug Natural Biotic Area begins at a point marked "1" on the map which is identical to corner 1 of Project No. 19-B, Block C, Timberland, LC Map No. 2004

Thence	S 60 <sup>00</sup> 'W,	175.00 meters	to corner 2;
Thence	S 75 <sup>00</sup> 'W,	300.00 meters	to corner 3;
Thence	S 35 <sup>00</sup> 'W,	250.00 meters	to corner 4;
Thence	S 73 <sup>00</sup> 'W,	250.00 meters	to corner 5;
Thence	S 61 <sup>00</sup> 'W,	235.00 meters	to corner 6;
Thence	S 81 <sup>00</sup> 'W,	160.00 meters	to corner 7;
Thence	N 48 <sup>00</sup> 'W,	350.00 meters	to corner 8;
Thence	N 66 <sup>00</sup> 'W,	340.00 meters	to corner 9;
Thence	N 20 <sup>00</sup> 'E,	250.00 meters	to corner 10;
Thence	N 08 <sup>00</sup> 'E,	361.00 meters	to corner 11;
Thence	N 29 <sup>01</sup> 'E,	171.30 meters	to corner 12;
Thence	N 86 <sup>03</sup> 'E,	223.30 meters	to corner 13;
Thence	S 20 <sup>03</sup> 'E,	68.90 meters	to corner 14;
Thence	S 31 <sup>01</sup> 'W.	138.30 meters	to corner 15;



Thence	S 78 <sup>0</sup> 09'E,	209.10 meters	to corner 16;
Thence	N 44 <sup>0</sup> 22'E,	165.10 meters	to corner 17;
Thence	S 77 <sup>0</sup> 10'E,	174.10 meters	to corner 18;
Thence	N 73 <sup>0</sup> 22'E,	164.60 meters	to corner 19;
Thence	S 09 <sup>0</sup> 34'E,	199.00 meters	to corner 20;
Thence	S 02 <sup>0</sup> 00;W,	218.10 meters	to corner 21;
Thence	N 74 <sup>0</sup> 02'E,	470.70 meters	to corner 22;
Thence	S 58 <sup>0</sup> 00'E	288.00 meters	to corner 23;
Thence	N 17 <sup>0</sup> 00'E,	143.00 meters	to corner 24;
Thence	N 17 <sup>0</sup> 00'E,	210.00 meters	to corner 25;
Thence	N 29 <sup>0</sup> 00'E,	340.00 meters	to corner 26;
Thence	N 13 <sup>0</sup> 00'E,	240.00 meters	to corner 27;
Thence	N 07 <sup>0</sup> 00'E,	180.00 meters	to corner 28;
Thence	N 12 <sup>0</sup> 00'E,	240.00 meters	to corner 29;
Thence	N 28 <sup>0</sup> 00'W,	350.00 meters	to corner 30;
Thence	N 17 <sup>0</sup> 18'E,	112.20 meters	to corner 31;
Thence	N 03 <sup>0</sup> 15'E,	158.90 meters	to corner 32;
Thence	N 07 <sup>0</sup> 02'W,	150.10 meters	to corner 33;
Thence	N 16 <sup>0</sup> 37'W,	225.50 meters	to corner 34;
Thence	N 12 <sup>0</sup> 26'W,	245.00 meters	to corner 35;
Thence	N 19 <sup>0</sup> 23'W,	210.20 meters	to corner 36;
Thence	N 70 <sup>0</sup> 20'W,	206.30 meters	to corner 37;
Thence	N 89 <sup>0</sup> 00'W,	231.30 meters	to corner 38;
Thence	S 80 <sup>0</sup> 18'W,	241.40 meters	to corner 39;
Thence	S 76 <sup>0</sup> 37'W,	194.70 meters	to corner 40;
Thence	N 32 <sup>0</sup> 00'W,	300.00 meters	to corner 41;
Thence	N 76 <sup>0</sup> 40'E,	534.47 meters	to corner 42;
Thence	N 21 <sup>0</sup> 37'E,	215.46 meters	to corner 43;
Thence	N 44 <sup>0</sup> 38'E,	643.49 meters	to corner 44;
Thence	N 50 <sup>0</sup> 37'E,	397.17 meters	to corner 45;
Thence	N 44 <sup>0</sup> 39'E,	330.74 meters	to corner 46;
Thence	N 53 <sup>0</sup> 45'E,	336.40 meters	to corner 47;
Thence	N 11 <sup>0</sup> 38'W,	284.90 meters	to corner 48;
Thence	N 12 <sup>0</sup> 28'E,	195.14 meters	to corner 49;
Thence	N 24 <sup>0</sup> 38'W,	233.14 meters	to corner 50;
Thence	N 05 <sup>0</sup> 49'E,	184.98 meters	to corner 51;
Thence	S 10 <sup>0</sup> 25'E,	203.10 meters	to corner 52;
Thence	S 48 <sup>0</sup> 05'E,	191.78 meters	to corner 53;
Thence	S 61 <sup>0</sup> 06'E,	248.85 meters	to corner 54;
Thence	S 68 <sup>0</sup> 02'E,	220.66 meters	to corner 55;
Thence	S 67 <sup>0</sup> 01'E,	215.75 meters	to corner 56;
Thence	S 84 <sup>0</sup> 03'E,	234.82 meters	to corner 57;
Thence	N 60 <sup>0</sup> 37'E,	188.12 meters	to corner 58;
Thence	N 49 <sup>0</sup> 29'E,	187.66 meters	to corner 59;
Thence	S 63 <sup>0</sup> 38'E,	182.70 meters	to corner 60;
Thence	S 19 <sup>0</sup> 46'E,	304.98 meters	to corner 61;



Thence	S 32°36'E,	324.57 meters	to corner 62;
Thence	S 73°19'E,	161.92 meters	to corner 63;
Thence	S 05° 01'E,	255.12 meters	to corner 64;
Thence	S 33° 37'W,	138.89 meters	to corner 65;
Thence	S 29° 19'E,	174.69 meters	to corner 66;
Thence	S 54° 02'W,	132.47 meters	to corner 67;
Thence	S 23° 32'E,	194.88 meters	to corner 68;
Thence	S 28° 31'E,	234.73 meters	to corner 69;
Thence	N 83° 33'W,	183.81 meters	to corner 70;
Thence	N 73° 12'W,	222.95 meters	to corner 71;
Thence	N 65° 20'W,	187.32 meters	to corner 72;
Thence	N 63° 03'W,	232.16 meters	to corner 73;
Thence	N 79° 05'W,	258.45 meters	to corner 74;
Thence	S 16° 12'W,	138.97 meters	to corner 75;
Thence	S 09° 35'W,	199.92 meters	to corner 76;
Thence	S 15° 22'W,	174.75 meters	to corner 77;
Thence	S 11° 36'W,	229.87 meters	to corner 78;
Thence	S 12° 50'E,	215.09 meters	to corner 79;
Thence	S 11° 51'E,	190.10 meters	to corner 80;
Thence	S 06° 59'E,	180.12 meters	to corner 81;
Thence	S 12° 32'W,	204.84 meters	to corner 82;
Thence	S 02° 05'E,	265.10 meters	to corner 83;
Thence	S 05° 02'E,	205.12 meters	to corner 84;
Thence	S 04° 36'W,	145.03 meters	to corner 85;
Thence	S 30° 29'E,	234.66 meters	to corner 86;
Thence	S 08° 00'W,	230.00 meters	to corner 87;
Thence	S 08° 00'W,	150.00 meters	to corner 88;
Thence	S 84° 00'W,	180.00 meters	to corner 89;
Thence	S 37° 00'W,	230.00 meters	to corner 90;
Thence	S 12° 00'E,	140.00 meters	to corner 91;
Thence	S 58° 00'E,	200.00 meters	to corner 92;
Thence	S 75° 00'E,	160.00 meters	to corner 93;
Thence	S 16° 00'W,	150.00 meters	to corner 94;
Thence	S 11° 00'W,	170.00 meters	to corner 95;
Thence	S 46° 00'W,	210.00 meters	to corner 96;
Thence	S 00° 10'E'	240.00 meters	to corner 97;
Thence	S 30° 00'W,	250.00 meters	to corner 98;
Thence	S 44°00'W,	170.00 meters	to corner 100;
Thence	S 22° 00'W,	210.00 meters	to corner 101;
Thence	S 24° 00'E,	150.00 meters	to corner 102;
Thence	S 82° 00'W,	280.00 meters	to corner 103;
Thence	S 66° 00'W,	285.00 meters	to corner 104;
Thence	N12° 00'E,	175.00 meters	to corner 105;
Thence	N25° 00'W,	280.00 meters	to corner 106;
Thence	N33°00'W,	260.00 meters	to corner 107;
Thence	N53°00'W,	270.00 meters	to corner 108;



Thence S 83°00'W, 280.00-meters to corner 1, the point of beginning,  
 containing an area of ONE THOUSAND NINETY FIVE (1,095) HECTARES,  
 more orless.

The Buffer Zone Parcel 1 begin at a point marked "1" which is identical to corner 9 of Project No. 19-C, Block C, Timberland, LC Map No. 2004;

Thence	N 27°02'W,	260.1 meters	to corner 2;
Thence	N 70°01'W,	140.2 meters	to corner 3;
Thence	N 51°02'W,	240.3 meters	to corner 4;
Thence	N 78°01'W,	180.3 meters	to corner 5;
Thence	N 00°01'E,	235.1 meters	to corner 6;
Thence	N 27°57'E,	290.0 meters	to corner 7;
Thence	N 52°58'E,	239.8 meters	to corner 8;
Thence	S 86°00'E,	239.6 meters	to corner 9;
Thence	S 60°58'E,	174.8 meters	to corner 10
Thence	N 89°35'E,	249.6 meters	to corner 11;
Thence	S 79°59'E,	279.6 meters	to corner 12;
Thence	S 87°00'E,	244.6 meters	to corner 13;
Thence	N 84°59'E,	264.6 meters	to corner 14;
Thence	S 48°58'E,	329.7 meters	to corner 15;
Thence	S 38°58'E,	179.9 meters	to corner 16;
Thence	S 06°00'E,	239.9 meters	to corner 17;
Thence	S 74°02'W,	470.7 meters	to corner 18;
Thence	N 02°00'E,	218.1 meters	to corner 19;
Thence	N 09°34'W,	199.0 meters	to corner 20;
Thence	S 73°22'W,	164.6 meters	to corner 21;
Thence	N 77°10'W,	174.1 meters	to corner 22;
Thence	S 44°22'W,	165.1 meters	to corner 23;
Thence	N 78°09'W,	209.1 meters	to corner 24;
Thence	N 31°13'E,	138.3 meters	to corner 25;
Thence	N20°34'W,	68.9 meters	to corner 26;
Thence	S86°35'W,	223.3 meters	to corner 27;
Thence	S 29°17'W,	171.3 meters	to corner 28;
Thence	S 08°30'W,	361.2 meters	to corner 29;
Thence	S 20°27'W,	250.6 meters	to corner 1,

the point of beginning,

containing an area of ONE HUNDRED EIGHT (108) HECTARES, more or less.

The Buffer Zone Parcel 2 begins at a point marked "1" which is identical to corner 30 of Buug Natural Biotic Area;



Thence	N 31°58'W,	289.80 meters	to corner 2;
Thence	N 38°58'W,	309.80 meters	to corner 3;
Thence	N 51°58'W,	249.70 meters	to corner 4
Thence	N 02°00'E,	180.00 meters	to corner 5;
Thence	N 61°58'W,	259.70 meters	to corner 6;
Thence	N 66°58'W,	269.60 meters	to corner 7
Thence	N 76°37'E,	194.70 meters	to corner 8;
Thence	N 80°16'E,	241.40 meters	to corner 9;
Thence	N 89°00'E,	321.30 meters	to corner 10;
Thence	S 70°20'E,	206.30 meters	to corner 11;
Thence	S 19°23'E,	210.20 meters	to corner 12;
Thence	S 12°26'E,	245.00 meters	to corner 13;
Thence	S 16°37'E,	225.50 meters	to corner 14;
Thence	S 07°02'E,	150.01 meters	to corner 15;
Thence	S 03°15'W,	158.90 meters	to corner 16;
Thence	S 17°18'W,	112.20 meters	to corner 1,

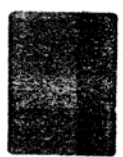
the point of beginning, containing an area of FORTY FOUR (44) HECTARES, more or less.

The Buffer Zone Parcel 3 begins at a point marked "1" on the map which is identical to corner 51 of Buug Natural Biotic Area;

Thence	N 39°04'E,	113.92 meters	to corner 2;
Thence	N 68°00'E,	207.46 meters	to corner 3;
Thence	N 39°32'E,	233.81 meters	to corner 4;
Thence	N 12°01'E,	424.29 meters	to corner 5;
Thence	S 83°43'E,	340.47 meters	to corner 6;
Thence	S 73°29'E,	164.71 meters	to corner 7;
Thence	S 46°32'E,	137.84 meters	to corner 8;
Thence	S 27°28'E,	336.77 meters	to corner 9;
Thence	S 10°57'W,	175.59 meters	to corner 10;
Thence	S 40°05'E,	155.96 meters	to corner 11;
Thence	S 21°49'E,	166.48 meters	to corner 12;
Thence	S 08°56'W,	265.76 meters	to corner 13;
Thence	S 49°29'W,	187.66 meters	to corner 14;
Thence	S 60°37'W,	188.12 meters	to corner 15;
Thence	N 84°03'W,	234.82 meters	to corner 16;
Thence	N 67°01'W,	215.75 meters	to corner 17;
Thence	N 68°02'W,	220.66 meters	to corner 18;
Thence	N 61°06'W,	248.85 meters	to corner 19;
Thence	N 48°05'W,	191.78 meters	to corner 20;
Thence	N 10°25'W,	203.10 meters	to corner 1, the point

of beginning,

Containing an area of ONE HUNDRED TWENTY SEVEN (127) HECTARES, more or less.



The Buffer Zone Parcel 4 begins at a point marked "1" on the map which is identical to corner 26 of Project No. 19-C, Block C, alienable and Disposable, LC Map No. 2228;

Thence	S 43 <sup>0</sup> 42'W,	232.47 meters	to corner 2;
Thence	S 73 <sup>0</sup> 27'W,	297.18 meters	to corner 3;
Thence	S 71 <sup>0</sup> 25'W,	162.23 meters	to corner 4;
Thence	N 30 <sup>0</sup> 29'W,	234.66 meters	to corner 5;
Thence	N 04 <sup>0</sup> 36'E,	145.03 meters	to corner 6;
Thence	N 05 <sup>0</sup> 02'W,	205.12 meters	to corner 7;
Thence	N 02 <sup>0</sup> 05'W,	265.10 meters	to corner 8;
Thence	N 12 <sup>0</sup> 32'E,	204.84 meters	to corner 9;
Thence	N 06 <sup>0</sup> 59'W,	180.12 meters	to corner 10;
Thence	N 11 <sup>0</sup> 51'W,	190.10 meters	to corner 11;
Thence	N 12 <sup>0</sup> 50'W,	215.09 meters	to corner 12;
Thence	N 11 <sup>0</sup> 36'E,	229.87 meters	to corner 13;
Thence	N 15 <sup>0</sup> 22'E,	174.75 meters	to corner 14;
Thence	N 09 <sup>0</sup> 35'E,	199.92 meters	to corner 15;
Thence	N 16 <sup>0</sup> 12'E,	138.97 meters	to corner 16;
Thence	S 79 <sup>0</sup> 05'E,	258.45 meters	to corner 17;
Thence	S 63 <sup>0</sup> 03'E,	232.16 meters	to corner 18;
Thence	S 65 <sup>0</sup> 20'E,	187.32 meters	to corner 19;
Thence	S 73 <sup>0</sup> 12'E,	222.95 meters	to corner 20;
Thence	S 83 <sup>0</sup> 33'E,	183.81 meters	to corner 21;
Thence	S 25 <sup>0</sup> 08'W,	262.32 meters	to corner 22;
Thence	S 06 <sup>0</sup> 48'E,	203.96 meters	to corner 23;
Thence	S 27 <sup>0</sup> 13'E,	197.91 meters	to corner 24;
Thence	S 36 <sup>0</sup> 22'E,	197.42 meters	to corner 25;
Thence	S 44 <sup>0</sup> 13'W,	154.67 meters	to corner 26;
Thence	N 75 <sup>0</sup> 15'W,	96.83 meters	to corner 27;
Thence	S 37 <sup>0</sup> 53'W,	475.14 meters	to corner 28;
Thence	S 30 <sup>0</sup> 24'W,	169.85 meters	to corner 29;
Thence	S 11 <sup>0</sup> 59'E,	317.14 meters	to corner 1, the point of beginning,

Containing an area of ONE HUNDRED NINETY ONE (191) HECTARES, more or less.

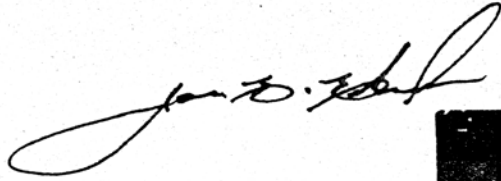
The technical descriptions of Buug Natural Biotic Area and its Buffer Zone shall be subject to actual ground survey.

These areas shall be under the management jurisdiction of the Department of Environment and Natural Resources (DENR) and shall be administered in accordance with the provisions of the NIPAS Act of 1992.



7  
IN WITNESS WHEREOF, I have hereunto set my hands and caused the seal of the Republic of the Philippines to be affixed.

Done in the City of Manila, this 22<sup>nd</sup> day of December in the year of Our Lord Nineteen Hundred and Ninety Eight.



By the President:



**RONALDO B. ZAMORA**  
Executive Secretary

**PMS LIBRARY**

**Received**

**JAN 20 1999**

**Date**

12



PJEE Hologram # 2366 *A*



**PMS LIBRARY BCODEC04933**